

# Weekly Stock Market Report

Thursday, August 1, 2019

## Broad Market Measurement

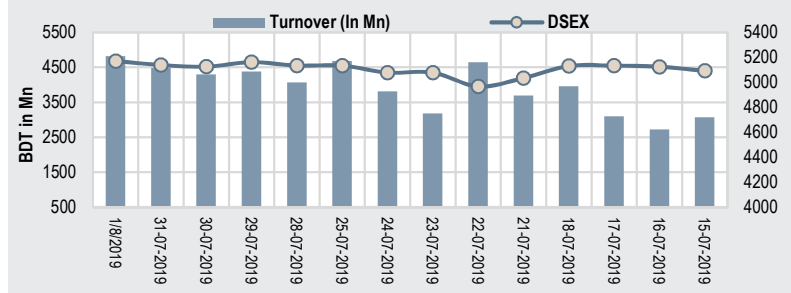
	8/1/2019	7/25/2019	% Change
Trailing P/E	14.27	13.86	▲ 2.97%
Annualized P/E	15.15	14.07	▲ 7.68%
Price/ NAV	2.06	2.05	▲ 0.60%
Dividend Yield	3.00%	3.00%	▲ 0.02%
Market RSI	47.35	42.50	▲ 11.4%

## Economic Update

	24/7/2019	10/7/2019	% Change
Forex Reserve(mn \$)	32032.11	31748.05	▲ 0.9%
Call Money Rate	3.67%	3.14%	▲ 16.9%
Dollar Exchange Rate	84.50	84.50	▲ 0.0%
Euro Exchange	105.46	94.85	▲ 11.2%
Pound Exchange Rate	94.12	105.07	▼ -10.4%

Losers	178.00
Unchanged	17.00
Gainers	159.00

## DSE Weekly Overview



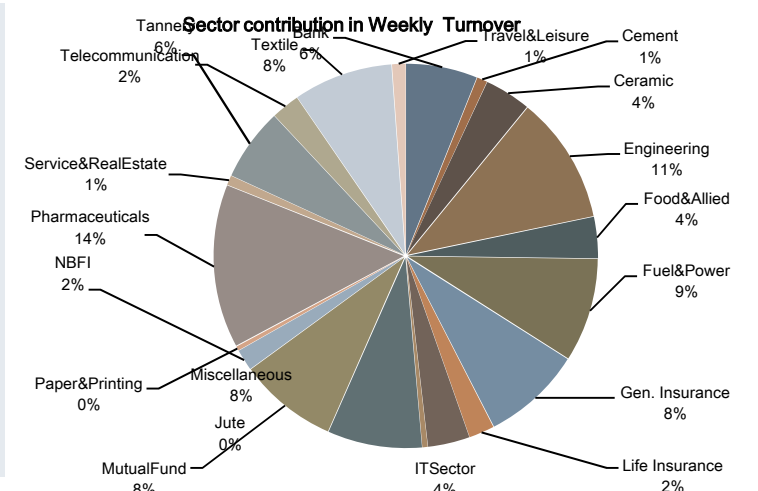
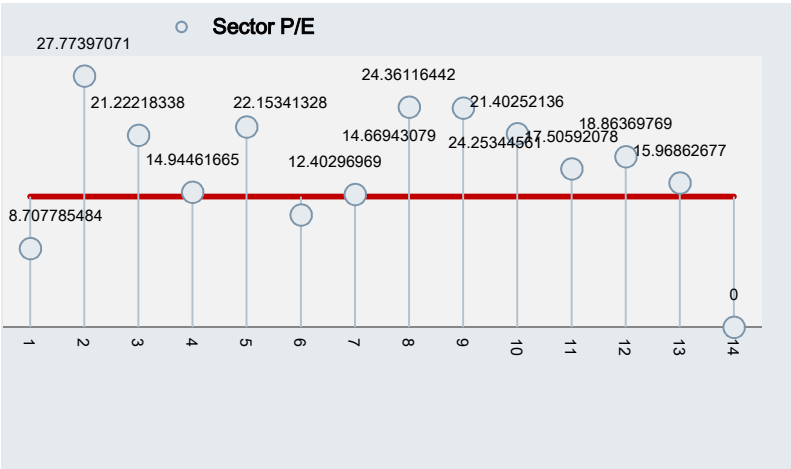
Index	Close	Open	% Change	Point Change
DSEX	5169.74	5133.26	▲ 0.7%	▲ 36.48
DS30	1838.50	1836.19	▲ 0.1%	▲ 2.31

## Market Activities Summary

	This Week	Prev. Week	% Change
Avg. Daily Turnover (BDT mn)	4404.46	3996.85	▲ 10.2%
Avg. Daily Turnover (USD mn)	54.66	49.50	▲ 10.4%
Total No of Trade	639420	584992	▲ 9.3%
Avg. Trade Volume	144071256	158553783	▼ -9.1%

## Weekly Sector Overview

	Listed Company	Trailing P/E	P/B	Average Daily Turnvoer BDT (mn)	% Δ in Average Turnover	Trade Volume	% Change in volume	Sector Capitalization (BDT In Mn)	Weekly Return
Bank	30	7.8	1.02	260.45	4%	15163550	2%	565483.70	1.31%
Cement	7	28.5	2.27	38.39	16%	771779	56%	84857.88	0.69%
Ceramic	5	20.2	1.82	169.56	127%	1238832	23%	25255.64	9.71%
Engineering	38	14.0	1.87	465.12	38%	6904081	12%	193794.99	2.07%
Food&Allied	17	34.0	17.33	150.50	44%	2384522	36%	287202.21	-2.21%
Fuel&Power	19	12.1	1.97	377.19	13%	4773087	8%	471163.89	0.87%
Gen. Insurance	35	14.6	1.21	363.68	-20%	14039012	-27%	48881.62	-4.03%
Life Insurance	12	N/M*	0.00	93.36	-31%	1659875	27%	61015.49	-2.87%
ITSector	9	24.7	2.74	152.66	163%	3587973	110%	20581.48	7.30%
Jute	3	-29.8	8.79	19.26	124%	37251	105%	3840.87	10.92%
Miscellaneous	13	25.4	1.33	343.32	32%	7385018	7%	113008.97	5.08%
MutualFund	37	N/M*	0.00	360.12	-19%	40666122	-19%	36525.37	-8.44%
NBFI	23	25.5	1.62	78.22	-19%	5362980	-37%	162293.64	-1.13%
Paper&Printing	3	20.6	8.12	16.19	16%	308426	17%	13775.75	0.30%
Pharmaceuticals	32	17.5	3.02	595.86	25%	12533747	8%	527277.09	2.40%
Service&RealEstate	4	16.9	2.04	35.01	32%	1298859	59%	16214.92	-0.33%
Tannery	6	22.8	3.53	264.59	32%	5080468	13%	26341.50	0.59%
Telecommunication	2	13.0	12.01	103.29	16%	625032	28%	475469.52	3.78%
Textile	55	15.1	1.03	362.19	12%	15404478	-14%	127244.19	-0.61%
Travel&Leisure	5	-22.7	0.58	49.83	-36%	2200793	-30%	22504.15	-3.92%



## Weekly Observation

### Index showed upward movement this week

The benchmark DSEX index gained 36.48 points, a 0.70% increase over the last trading week. At the end of the week, index closed green at ~5169.74 levels. Market participation has decreased by 10.2%. All the large cap sectors showed positive movement except NBFIL. Among the large cap sectors Telecommunication posted highest positive change with 3.78%. Average Trade Volume decreased by 9.1% and total number of trades increased by 9.3%.

Among the major economic issues, The World Bank (WB) is likely to provide some US\$ 4.5 billion assistance to Bangladesh in next three years, officials said early this week. Shipments of plastic products rose 22 % year-on-year to USD120 million in fiscal 2018-19, something manufacturers and traders attribute to the emergence of new export destinations. State Minister for Information and Communication technology (ICT) Zunaid Ahmed Palak yesterday said the government has taken a project to construct a software technology park in Sherpur at a cost of BDT 40 crore. Germany is going to provide 200 million euros, or BDT 1,846.6 crore, to Bangladesh to implement a number of development projects, the Economic Relations Division (ERD) said in a statement. The Bangladesh Bank yesterday unveiled a loose monetary policy for fiscal 2019-20 as it looks to pump money into the economy to alleviate the banking system's prolonged liquidity crunch.

Top gaining stocks of the week were MONNOCERA (42.99%), BDWELDING (42.18%) and MONNOSTAF (37.68%). Conversely, top losing stocks were SUNLIFEINS (-39.56%), BIFC (-31.25%) and EBL1STMF (-30.00%).

FORTUNE topped the weekly turnover list followed by UPGDCL, BSC, MONNOCERA and SQRPHARMA.

## Weekly Top Performer

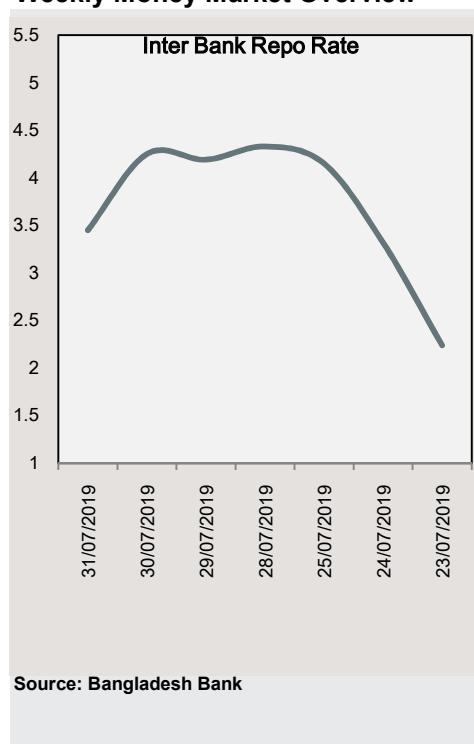
Turnover Leaders			
Company	Closing Price	% Δ	Avg. Daily Turnover (mn)
FORTUNE	42.30	9.87%	188.84
UPGDCL	383.60	1.37%	183.15
BSC	58.60	15.58%	153.82
MONNOCERA	214.20	42.99%	142.28
SQRPHARMA	251.90	-1.18%	94.63
BEACONPHAR	23.60	15.69%	92.32
GENEXIL	60.90	17.34%	76.17
JMISMDL	466.10	1.77%	76.07
SINOBANGLA	81.80	22.09%	74.72
SINGERBD	217.60	10.68%	64.83

Top Gainers/Least Losers			
Company	Closing Price	% Δ	Avg. Daily Turnover (mn)
MONNOCERA	214.20	42.99%	142.28
BDWELDING	20.90	42.18%	7.44
MONNOSTAF	1054.10	37.68%	27.94
SEMLFBSLGF	32.40	28.06%	3.81
STYLECRAFT	703.70	26.95%	32.97
SEMLIBLSF	11.60	24.73%	27.54
SINOBANGLA	81.80	22.09%	74.72
STANCERAM	310.80	21.55%	21.90
SONALIANS	521.80	21.52%	16.31
SONARGAON	36.40	21.33%	3.38

Market Cap Leaders			
Company	Closing Price	% Δ	Avg. Daily Turnover (mn)
GP	337.10	3.4%	45.34
BATBC	1238.50	-2.8%	56.45
SQRPHARMA	251.90	-1.2%	94.63
UPGDCL	383.60	1.4%	183.15
RENATA	1179.50	0.6%	5.86
BRACBANK	62.70	1.8%	21.94
ICB	106.30	0.9%	2.52
BERGERPBL	1496.20	7.0%	10.94
MARICO	1735.80	15.7%	14.42
LHBL	39.70	6.4%	27.04

Top Losers/Least Gainers			
Company	Closing Price	% Δ	Avg. Daily Turnover (mn)
SUNLIFEINS	16.50	-39.56%	3.76
BIFC	2.20	-31.25%	0.13
EBL1STMF	5.60	-30.00%	1.64
VAMLRBBF	6.70	-26.37%	8.42
ATCSLGF	9.60	-24.41%	38.05
PRAGATILIF	109.90	-21.44%	6.80
EXIM1STMF	5.00	-19.35%	3.68
ILFSL	5.90	-19.18%	4.90
PHPMF1	4.40	-18.52%	9.49
FAREASTFIN	3.10	-18.42%	0.17

## Weekly Money Market Overview



# Weekly Stock Market Report

## Sectorwise Traded Scrips

Ticker	Close	High	Low	Avg Daily Volume	Avg Daily Turnover (BDTmn)	Δ In Turnover	% of Sector Turnover	Return	RSI****	EMA (10)*****	Market Cap	P/E*	P/B**	ROE***
<b>Bank</b>											<b>BDT Mn</b>			
ABBANK	8.8	10	8.8	110178	1.01	▼ -39%	0.39%	▼ -2.2%	32.69	20.32	6672	0.00	0.27	0%
ALARABANK	18.3	19	18	142432	2.65	▼ -67%	1.02%	▼ -0.5%	43.16	14.30	19106	7.53	0.97	13%
BANKASIA	18.3	19	17.5	120777	2.17	▼ -36%	0.83%	▲ 4.0%	56.18	16.21	21336	9.50	1.12	12%
BRACBANK	62.7	64	62	349430	21.94	▼ -51%	8.43%	▲ 1.8%	49.85	48.86	77333	13.98	2.91	23%
CITYBANK	27.8	28	26.9	574094	15.79	▼ -12%	6.06%	▲ 1.5%	56.74	20.06	28256	11.08	1.15	9%
DHAKABANK	13.3	14	13	417942	5.62	▼ -45%	2.16%	▼ -3.6%	41.31	19.02	11348	7.85	0.76	10%
DUTCHBANGL	68.2	70	66.9	478675	32.50	▲ 298%	12.48%	▲ 2.9%	49.83	102.91	34100	7.59	1.93	24%
EBL	37.5	38	37	118289	4.42	▲ 7%	1.70%	▲ 0.0%	53.80	27.99	30442	9.10	1.46	15%
EXIMBANK	10.4	11	10.4	861396	9.10	▲ 83%	3.49%	▲ 1.0%	41.54	8.63	14687	5.00	0.55	9%
FIRSTSBANK	10.2	10	10	895278	9.06	▲ 36%	3.48%	▲ 5.2%	56.50	8.77	8798	4.36	0.82	16%
ICBIBANK	3.7	4	3.7	85837	0.33	▼ -19%	0.13%	▼ -2.6%	37.38	4.41	2459	0.00	-0.24	5%
IFIC	9.9	10	10	1364951	13.43	▼ -33%	5.16%	▲ 1.0%	48.09	20.99	13254	6.91	1.07	7%
ISLAMIBANK	22.7	24	22.5	178186	4.10	▼ -18%	1.57%	▲ 0.9%	40.04	27.97	36547	5.55	0.75	13%
JAMUNABANK	17.6	18	17	368220	6.43	▼ -31%	2.47%	▲ 1.1%	53.09	11.80	13186	5.70	0.84	15%
MERCANBANK	14.0	15	13.7	1623962	22.93	▲ 218%	8.80%	▲ 2.9%	47.38	9.68	11409	4.16	0.68	17%
MTB	33.4	34	33	17062	0.57	▼ -53%	0.22%	▲ 0.0%	48.65	19.09	19150	11.44	1.95	19%
NBL	8.2	9	8.2	889713	7.42	▼ -46%	2.85%	▼ -1.2%	37.90	9.30	21770	5.82	0.60	11%
NCCBANK	14.0	14	14	520937	7.26	▲ 196%	2.79%	▲ 0.7%	51.95	9.04	12365	5.88	0.75	11%
ONEBANKLTD	12.4	12	12.1	601201	7.35	▲ 44%	2.82%	▼ -0.8%	40.01	14.59	9505	5.81	0.76	13%
PRIMEBANK	19.5	20	19	238656	4.57	▼ -53%	1.75%	▲ 5.4%	68.94	18.96	22080	9.65	0.87	9%
PREMIERBAN	11.2	11	10.7	2012857	22.27	▲ 35%	8.55%	▲ 4.7%	53.68	8.19	10350	3.79	0.97	20%
PUBALIBANK	26.5	28	26	180566	4.80	▲ 79%	1.84%	▲ 2.3%	58.38	20.63	27250	7.35	1.11	15%
RUPALIBANK	34.3	35	33.6	71113	2.43	▲ 76%	0.93%	▼ -3.7%	36.99	39.81	12915	38.09	1.01	3%
SHAHJABANK	24.9	25	24	77433	1.89	▼ -20%	0.73%	▲ 2.9%	52.52	12.30	21129	14.84	1.62	9%
SIBL	14.1	15	14.0	248340	3.54	▼ -50%	1.36%	▼ -2.8%	42.16	13.09	11451	7.23	0.81	12%
SOUTHEASTB	14.3	15	13	1072458	14.88	▲ 154%	5.71%	▲ 10.0%	66.51	16.88	15079	4.98	0.57	9%
STANDBANKL	9.1	10	8.9	428881	3.92	▲ 11%	1.51%	▼ -5.2%	33.42	9.22	7926	6.36	0.63	10%
TRUSTBANK	31.8	32	31	140943	4.44	▼ -22%	1.71%	▲ 1.9%	53.80	23.04	17712	7.87	1.54	17%
UTTARABANK	28.0	29	27.6	680711	19.06	▲ 10%	7.32%	▲ 2.2%	53.22	21.47	11426	5.35	0.85	13%
UCB	15.6	16	15	293033	4.58	▲ 60%	1.76%	▼ -1.3%	39.67	20.70	16444	5.95	0.64	10%

## Cement

ARAMITCEM	17.1	18	16.1	13523	0.23	▲ 70%	0.60%	▲ 0.6%	42.76	36.32	579	0.00	1.53	-36%
CONFIDCEM	140.8	146	135	48624	6.81	▼ -54%	17.73%	▼ -3.8%	42.26	83.61	9123	19.67	2.41	13%
HEIDELBCEM	201.5	205	192.1	18071	3.60	▼ -13%	9.38%	▼ -12.4%	25.10	588.06	11385	26.97	2.04	14%
LHBL	39.7	41	38	681883	27.04	▲ 110%	70.44%	▲ 6.4%	58.13	83.29	46107	33.36	3.00	7%
MEGHNACEM	83.8	85	81.0	5756	0.48	▼ -39%	1.24%	▼ -0.4%	46.53	99.16	2074	20.56	2.51	11%
MICEMENT	58.4	61	57	3267	0.19	▼ -20%	0.50%	▼ -2.7%	38.45	68.40	8672	28.49	1.22	5%
PREMIERCEM	65.6	70	65.0	654	0.04	▲ 96%	0.11%	▲ 0.0%	43.65	78.83	6918	13.93	1.61	11%

## Ceramic

FUWANGCER	10.0	11	9.7	252979	2.55	▼ -33%	1.50%	▼ -3.8%	40.47	11.58	1363	15.19	1.22	8%
MONNOCERA	214.2	214	142	795523	142.28	▲ 137%	83.91%	▲ 43.0%	64.36	34.72	6996	30.51	3.07	5%
RAKCERAMIC	30.6	32	30.5	76952	2.38	▲ 20%	1.40%	▼ -1.9%	38.18	66.80	13096	15.44	2.23	16%
SPCERAMICS	12.2	12	12	37857	0.45	▼ -33%	0.27%	▲ 5.2%	50.37	11.36	1793	25.96	0.40	1%
STANCERAM	310.8	311	250.1	75522	21.90	▲ 167%	12.91%	▲ 21.5%	75.52	49.46	2008	121.41	18.50	9%

## Engineering

AFTABAUTO	33.9	34	31.5	56988	1.88	▲ 20%	0.40%	▲ 3.4%	51.13	53.61	3245	18.32	0.57	5%
ANWARGALV	80.3	81	76	140089	11.01	▲ 39%	2.37%	▲ 4.2%	57.78	67.61	1166	64.24	9.90	16%
APOLOISPAT	5.2	6	5.2	484762	2.62	▼ -28%	0.56%	▼ -7.1%	35.69	0.00	2087	0.00	0.27	0%
ATLASBANG	130.3	133	116	22521	2.85	▲ 68%	0.61%	▲ 8.5%	61.66	146.89	4316	0.00	0.96	-1%
AZIZPIPES	152.1	158	130.0	47125	6.95	▲ 39%	1.49%	▲ 5.7%	54.59	41.38	813	203.06	-3.12	-1%
BBSCABLES	94.1	95	92	254763	23.77	▼ -11%	5.11%	▲ 0.1%	0.00	0.00	14934	8.54	6.49	64%
BDAUTOCA	227.4	238	186.8	108581	23.76	▲ 83%	5.11%	▲ 6.4%	53.89	36.48	984	124.34	91.94	74%
BBS	26.5	27	26	125192	3.30	▲ 25%	0.71%	▲ 0.8%	47.39	36.44	3738	11.76	2.01	18%
BDLAMPS	204.1	208	186.5	38769	7.57	▲ 122%	1.63%	▲ 8.4%	56.35	200.17	1913	65.21	2.18	5%
BDTHAI	14.7	16	14	228892	3.39	▼ -38%	0.73%	▼ -0.7%	39.01	31.68	1824	19.08	0.57	4%
BENGALWTL	23.5	25	23.0	90291	2.13	▲ 32%	0.46%	▼ -4.1%	37.67	52.33	2150	17.15	0.98	7%
BSRMLTD	66.0	67	65	41290	2.72	▲ 22%	0.58%	▼ -1.8%	44.85	128.42	15581	5.21	1.43	29%
BSRMSTEEL	55.3	57	53.6	30580	1.70	▲ 24%	0.36%	▲ 1.5%	48.46	90.58	20790	10.07	1.80	18%

# Weekly Stock Market Report

## Sectorwise Traded Script

Ticker	Weekly Market Statistics								Market Technical and Fundamental Indicators							
	Close	High	Low	Avg Daily Volume	Avg Daily Turnover	Δ in Turnover	% of Sector Turnover	Weekly Return	RSI****	EMA (10)****	Market Cap	P/E*	P/B**	ROE***		
DESHBANDHU	12.5	13.2	11.9	146846	1.84	▼	-8%	0.40%	▲	0.0%	46	11.73	767	33.70	1.23	5.6%
ECABLES	300.3	306.9	268.1	74333	21.58	▲	64%	4.64%	▲	2.6%	50	132.18	7928	0.00	10.79	-0.5%
GOLDENSON	7.5	8.0	7.3	32273	0.24	▼	-62%	0.05%	▼	-3.8%	38	25.97	1288	0.00	0.32	-4.4%
GPHISPAT	33.9	34.7	33.5	64709	2.21	▼	-35%	0.47%	▲	0.0%	51	38.06	12210	16.11	2.42	14.4%
IFADAUTOS	69.7	70.9	68.5	178145	12.42	▲	10%	2.67%	▼	-4.7%	34	105.79	17285	11.93	2.88	32.0%
KAY&QUE	195.8	205.0	175.0	88449	17.23	▲	66%	3.70%	▲	11.3%	54	17.88	960	225.06	-17.04	-18.1%
KDSALTD	57.6	58.0	53.4	223040	12.55	▲	164%	2.70%	▲	2.1%	57	76.60	3632	25.34	2.56	10.2%
MONNOSTAF	1054.1	1054.1	744.1	31714	27.94	▲	97%	6.01%	▲	37.7%	65	260.44	2182	76.47	104.40	87.0%
NAHEEACP	50.7	51.3	48.2	122776	6.11	▲	46%	1.31%	▲	2.8%	50	260.44	2945	13.73	5.82	35.0%
NAVANACNG	51.5	52.2	44.2	345828	17.29	▲	336%	3.72%	▲	20.6%	79	45.40	3529	59.88	1.53	8.1%
NPOLYMAR	127.5	129.7	120.2	466932	58.37	▲	18%	12.55%	▲	10.2%	68	90.10	3814	25.79	3.70	9.6%
NLTUBES	118.0	118.9	113.2	115815	13.43	▲	31%	2.89%	▲	0.8%	53	90.07	3735	0.00	0.65	-1.1%
OAL	9.2	9.7	8.8	339327	3.11	▼	-19%	0.67%	▼	-4.2%	41	32.35	1560	15.17	0.69	6.1%
OIMEX	29.0	30.3	28.3	184005	5.34	▲	40%	1.15%	▼	-4.0%	42	32.35	1647	13.57	3.14	22.6%
QUASEMIND	34.7	35.2	31.2	62167	2.08	▲	73%	0.45%	▲	6.4%	54	97.12	2042	38.71	1.03	5.1%
RANFOUNDRY	142.0	142.5	133.3	14900	2.06	▲	36%	0.44%	▲	3.4%	53	100.77	1420	36.32	5.99	17.4%
RENWICKJA	1536.6	1545.0	1320.0	4377	6.39	▲	87%	1.37%	▲	18.2%	63	247.64	3073	227.64	-43.07	-15.9%
RSRMSTEEL	42.2	43.0	40.5	115685	4.85	▼	-14%	1.04%	▼	-0.9%	45	48.13	4270	6.04	1.11	20.1%
RUNNERAUTO	94.6	95.2	86.1	491341	44.08	▲	17%	9.48%	▲	1.3%	52	0.00	10229	30.32	3.13	0.0%
SALAMCRST	26.5	27.2	25.0	83271	2.18	▼	-1%	0.47%	▼	-2.2%	46	27.72	2607	19.92	1.36	6.4%
SHURWID	32.9	33.8	32.2	930030	30.81	▲	132%	6.62%	▲	2.5%	49	0.00	1887	22.37	3.00	3.7%
SINGERBD	217.6	221.0	205.0	306168	64.83	▲	40%	13.94%	▲	10.7%	71	153.16	21695	16.57	11.14	70.9%
SSSTEEL	23.5	24.9	23.1	269940	6.43	▲	53%	1.38%	▼	-5.2%	41	0.00	5758	14.60	1.69	0.0%
WMSHIPYARD	15.2	16.0	14.8	503405	7.69	▼	-20%	1.65%	▼	-1.9%	41	32.77	3033	5.57	0.60	9.8%
YPL	10.8	11.4	10.3	38761	0.42	▼	-5%	0.09%	▼	-6.1%	40	0.00	758	144.09	1.24	1.7%
<b>Financial Institution</b>																
BAYLEASING	14.3	15.6	14.1	17978	0.26	▼	-79%	0.34%	▼	-10.1%	34	18.80	1966	8.94	0.74	8.2%
BDFINANCE	11.6	12.0	10.9	473596	5.42	▲	13%	6.93%	▲	0.9%	45	10.31	1943	6.16	0.97	14.9%
BIFC	2.2	2.7	2.1	61252	0.13	▼	-39%	0.17%	▼	-31.3%	17	8.10	221	0.00	0.70	-169.5%
DBH	120.4	124.7	120.1	31297	3.82	▲	88%	4.88%	▼	-2.1%	40	106.19	16138	15.31	4.47	32.8%
FAREASTFIN	3.1	3.4	3.1	53591	0.17	▼	-80%	0.22%	▼	-18.4%	25	9.48	509	0.00	0.25	6.3%
FASFIN	7.0	7.8	7.0	1430928	10.55	▼	-31%	13.49%	▲	3.5%	37	10.54	1044	8.02	0.64	7.6%
FIRSTFIN	5.0	5.3	4.7	39813	0.20	▼	-57%	0.26%	▲	19.0%	47	11.10	581	0.00	0.39	-28.5%
GSPFINANCE	14.7	15.0	14.3	337343	4.94	▼	-36%	6.32%	▼	-4.5%	36	14.28	1900	6.28	0.75	14.4%
ICB	106.3	109.8	105.0	23565	2.52	▼	-25%	3.23%	▲	0.9%	44	113.22	74163	28.95	1.98	11.6%
IDLC	55.3	58.7	54.2	191536	10.78	▲	207%	13.78%	▼	-4.3%	31	62.23	20851	9.88	2.33	26.0%
ILFSL	5.9	6.7	5.9	784853	4.90	▼	-51%	6.27%	▼	-19.2%	23	9.23	1309	54.09	0.56	4.7%
IPDC	24.5	25.3	24.0	109102	2.67	▼	-3%	3.41%	▲	0.0%	32	29.21	5773	13.07	2.08	17.1%
ISLAMICFIN	14.8	15.4	14.7	119461	1.80	▼	-27%	2.30%	▼	-6.3%	39	15.37	2077	8.69	1.21	13.2%
LANKABAFIN	17.5	17.9	16.9	413959	7.19	▼	-42%	9.19%	▼	-2.8%	36	29.23	8981	20.59	1.34	6.7%
MIDASFIN	15.2	16.0	14.8	146204	2.24	▲	0%	2.87%	▼	-9.5%	37	14.90	2011	0.00	1.74	1.1%
NHFIL	39.9	40.9	37.0	249867	9.78	▲	41%	12.51%	▲	5.3%	55	27.69	4670	15.37	2.85	17.2%
PHOENIXFIN	25.3	25.4	24.6	17747	0.45	▼	-56%	0.57%	▼	-2.3%	32	19.84	3074	12.16	1.17	10.9%
PLFSL	#N/A	0.0	0.0	0	-	▲	0%	0.00%	#N/A	#N/A	16	14.71	#N/A	#N/A	0	-42.3%
PREMIERLEA	6.9	7.3	6.8	305381	2.13	▼	-42%	2.72%	▼	-10.4%	37	8.66	874	11.52	0.60	5.6%
PRIMEFIN	9.2	9.7	9.1	102482	0.95	▼	-38%	1.22%	▲	5.7%	42	11.43	2511	4.55	0.90	1.8%
UNIONCAP	7.8	8.2	7.7	124169	0.99	▼	-73%	1.26%	▼	-4.9%	31	14.59	1282	13.04	0.51	3.8%
UNITEDFIN	16.6	17.3	16.3	309120	5.15	▼	-49%	6.59%	▲	1.2%	43	20.93	3106	10.40	1.06	9.4%
UTTARAFIN	58.4	59.9	57.6	19737	1.16	▲	106%	1.48%	▼	-1.7%	42	57.83	7313	6.86	1.28	18.9%
<b>Food &amp; Allied</b>																
AMCL(PRAN)	233.7	242.0	226.6	2711	0.63	▼	-18%	0.46%	▲	0.0%	48	189.89	1870	34.52	3.84	12.1%
APEXFOODS	171.4	176.9	158.0	29170	4.90	▲	67%	3.59%	▲	5.7%	55	107.87	977	92.15	1.74	1.9%
BANGAS	300.4	310.0	292.9	84068	25.37	▲	49%	18.61%	▲	1.9%	53	286.54	2181	81.11	17.22	7.8%
BATBC	1238.5	1340.0	1222.2	44707	56.45	▲	58%	41.41%	▼	-2.8%	38	2911.67	222930	27.87	25.04	135.2%
BEACHHATCH	16.5	16.7	13.9	80790	1.25	▲	12%	0.92%	▲	11.5%	58	13.23	683	0.00	1.46	-3.6%
EMERALDOIL	12.6	13.5	11.4	194573	2.36	▲	329%	1.73%	▲	5.9%	49	52.07	752	0.00	1.12	0.0%
FINEFOODS	42.0	42.2	38.8	335538	13.72	▲	74%	10.06%	▲	10.5%	65	8.16	587	68.30	4.32	0.8%
FUWANGFOOD	13.1	13.8	12.4	1065322	14.03	▲	32%	10.29%	▼	-2.2%	43	16.68	1452	15.75	1.73	9.4%
GEMINISEA	258.9	266.0	220.0	28489	7.11	▲	73%	5.22%	▲	5.9%	52	387.40	1105	0.00	-233.25	83.1%
GHAIL	30.7	31.7	30.0	72317	2.21	▲	28%	1.62%	▲	0.7%	44	22.99	3681	0.00	1.95	-17.2%
MEGCONMILK	15.9	16.5	14.3	31373	0.49	▲	167%	0.36%	▼	-10.2%	46	7.11	254	0.00	-0.67	39.5%
MEGHNAPEP	10.2	10.5	8.9	10938	0.10	▲	3%	0.08%	▼	-13.6%	45	5.46	122	0.00	-6.72	30.8%
NTC	723.2	730.0	690.0	4778	3.40	▼	-20%	2.50%	▲	2.2%	58	605.89	4773	43.49	5.76	15.4%

# Weekly Stock Market Report

## Sectorwise Traded Script

Sector	Weekly Market Statistics									Market Technical and Fundamental Indicators						
	(BDTmn)									BDT Mn						
<b>Food &amp; Allied</b>																
OLYMPIC	223.3	232.0	221.6	63047	14.16	▼	-5%	9.41%	▼	-0.8%	42.72	283.63	44646	24.22	17.70	97.1%
RDFOOD	12.5	13.3	12.4	333751	4.24	▲	42%	2.81%	▼	-3.8%	38.25	14.21	861	38.63	0.99	3.2%
SHYAMPSUG	26.5	28.9	24.0	983	0.03	▼	-52%	0.02%	▲	14.2%	54.12	6.26	133	0.00	31.76	54.5%
ZEALBANGLA	32.2	34.5	31.7	1966	0.05	▼	-40%	0.03%	▼	-9.0%	39.98	6.83	193	0.00	-0.15	40.0%
<b>Fuel &amp; Power</b>																
BARKAPOWER	27.0	27.5	26.6	194086	5.26	▼	-49%	1.39%	▲	1.1%	41.53	29.97	5942	16.39	1.70	11.3%
BDWELDING	20.9	21.0	14.1	370016	7.44	▲	733%	1.97%	▲	42.2%	72.97	17.70	897	9.47	1.66	13.5%
CVOPRL	145.0	149.0	133.0	81663	11.60	▲	22%	3.07%	▼	-0.1%	49.87	345.96	3661	391.89	10.15	1.5%
LINDEBD	1202.4	1225.0	1163.5	7082	8.35	▲	145%	2.21%	▲	2.9%	61.51	1156.26	18298	16.66	5.75	33.6%
DESCO	43.3	44.4	42.6	36318	1.58	▼	-44%	0.42%	▲	0.7%	42.92	53.57	17215	18.74	1.15	3.4%
DOREENPWR	78.2	78.4	75.7	627254	48.36	▼	-14%	12.82%	▲	5.5%	57.36	53.57	9084	10.24	4.22	43.6%
EASTRN LUB	1269.6	1269.6	1099.0	5554	6.70	▲	126%	1.78%	▲	6.5%	60.06	322.34	1262	128.50	8.87	28.4%
GBBPOWER	10.1	10.2	9.5	59889	0.60	▼	-42%	0.16%	▲	0.0%	45.97	16.38	1028	9.02	0.50	4.8%
INTRACO	22.3	23.9	21.6	1851744	42.23	▲	97%	11.20%	▲	4.2%	53.48	0.00	1756	14.96	2.75	14.9%
JAMUNAOIL	167.7	170.8	166.7	16217	2.73	▼	-59%	0.72%	▼	-1.6%	37.19	183.11	18518	6.97	1.17	18.2%
KPCL	50.6	52.8	50.2	391041	20.06	▼	-6%	5.32%	▼	-1.0%	43.29	72.48	20109	8.88	2.08	26.5%
MJLBD	89.1	91.0	86.8	46711	4.14	▼	-53%	1.10%	▲	0.5%	51.37	87.83	28223	13.81	2.68	22.4%
MPETROLEUM	191.9	195.8	190.4	22748	4.38	▼	-4%	1.16%	▲	0.6%	47.12	175.19	20767	5.23	2.10	38.5%
PADMAOIL	226.6	227.5	223.2	14425	3.26	▼	-2%	0.86%	▼	-0.2%	48.60	201.74	22260	6.40	2.44	38.7%
POWERGRID	57.7	58.6	56.9	142157	8.20	▲	12%	2.17%	▲	2.9%	51.66	45.78	26595	8.23	0.64	5.7%
SPCL	74.7	76.5	73.7	61400	4.59	▲	19%	1.22%	▼	-3.9%	35.04	134.84	12389	19.19	2.54	14.7%
SUMITPOWER	39.6	39.8	38.8	314671	12.32	▼	-53%	3.26%	▲	1.0%	48.51	36.32	42288	8.63	1.36	16.1%
TITASGAS	37.5	38.3	37.3	59983	2.26	▼	-54%	0.60%	▼	-1.1%	39.04	53.90	37096	9.92	0.57	5.4%
UPGDCL	383.6	404.9	377.0	470129	183.15	▲	32%	48.56%	▲	1.4%	56.51	140.53	183778	22.07	12.28	40.3%
<b>Insurance</b>																
AGRANINS	21.5	23.6	21.3	236458	5.29	▼	-22%	1.16%	▼	-10.8%	30.97	14.21	650	12.33	1.43	12.0%
ASIAINS	23.2	24.6	23.0	373174	8.96	▼	-41%	1.97%	▼	-4.1%	38.84	14.27	1092	16.11	1.30	8.0%
ASIAPACINS	25.2	26.4	24.2	53818	1.37	▼	-5%	0.30%	▼	-3.8%	45.05	14.44	1067	13.70	1.52	9.6%
BGIC	24.8	25.2	23.2	50252	1.23	▼	-77%	0.27%	▼	-2.4%	53.53	16.96	1340	28.51	1.27	5.3%
BNICL	19.4	21.6	18.9	216837	4.40	▼	-49%	0.97%	▼	-11.8%	36.08	14.44	858	10.16	1.20	15.0%
CENTRALINS	24.9	26.9	24.3	173544	4.41	▼	-43%	0.97%	▲	0.0%	42.40	17.41	1172	12.77	1.15	10.0%
CITYGENINS	17.6	18.8	17.1	369322	6.60	▼	-13%	1.45%	▼	-10.2%	41.67	12.28	1200	12.22	1.34	10.5%
CONTININS	23.1	26.2	22.8	700968	17.13	▼	-60%	3.76%	▲	3.1%	47.73	14.60	838	12.09	1.37	9.1%
DHAKAINS	37.3	41.3	36.9	521797	20.33	▼	-20%	4.46%	▼	-6.8%	55.46	16.43	1497	17.59	2.15	11.7%
EASTERNINS	37.1	41.7	36.5	322781	12.66	▼	-6%	2.78%	▼	-16.4%	34.76	25.11	1599	10.08	0.99	9.7%
EASTLAND	27.0	27.1	25.5	738823	19.74	▲	71%	4.33%	▲	5.1%	57.26	19.87	1994	18.62	1.20	6.8%
FEDERALINS	13.6	15.6	13.4	1657510	24.16	▼	-59%	5.30%	▼	-9.9%	42.90	10.23	876	22.50	1.31	5.2%
GLOBALINS	25.7	28.4	23.8	1226230	32.60	▲	4%	7.15%	▼	-4.1%	49.54	12.18	945	37.79	2.35	5.0%
GREENDELTA	61.2	61.5	58.3	16640	1.00	▲	326%	0.22%	▲	0.3%	50.53	47.74	5432	23.51	0.91	4.2%
ISLAMIINS	22.1	23.3	21.9	220061	4.93	▼	-12%	1.08%	▼	-4.7%	45.02	14.84	788	14.73	1.88	13.4%
JANATAINS	16.5	19.0	16.1	119323	2.06	▼	-32%	0.45%	▼	-14.1%	35.24	12.30	664	15.87	1.29	8.2%
KARNAPHULI	18.5	20.0	18.0	167122	3.16	▼	-16%	0.69%	▼	-9.3%	43.31	12.03	791	14.34	1.00	7.4%
MERCINS	25.2	26.5	23.5	70900	1.78	▲	161%	0.39%	▼	-3.8%	44.19	12.09	1086	28.00	1.45	6.6%
NITOLINS	25.9	28.8	25.3	270379	7.25	▼	-36%	1.59%	▼	-11.9%	41.79	21.36	1041	8.49	1.38	16.7%
NORTHNRINS	20.8	22.5	20.4	205963	4.43	▼	-35%	0.97%	▼	-7.6%	38.83	17.16	887	16.77	1.13	9.4%
PARAMOUNT	22.6	25.0	22.4	551166	12.99	▼	-39%	2.85%	▼	-7.4%	47.72	11.24	751	28.25	1.99	3.0%
PEOPLESINS	20.8	23.2	20.3	342718	7.56	▲	28%	1.66%	▼	-7.1%	42.29	14.04	961	15.18	0.91	6.9%
PHENIXINS	27.3	30.5	27.1	79037	2.27	▲	161%	0.50%	▼	-6.2%	38.51	23.62	1101	11.05	0.79	7.3%
PIONEERINS	33.2	35.3	33.0	151249	5.15	▼	-16%	1.13%	▼	-4.0%	45.81	30.14	2323	8.08	1.05	13.0%
PRAGATIINS	34.2	36.9	33.6	14619	0.52	▼	-69%	0.11%	▼	-7.3%	38.22	24.79	2096	11.10	0.68	6.2%
PRIMEINSUR	21.1	24.2	20.5	427709	9.36	▼	-70%	2.05%	▼	-12.4%	42.61	14.62	863	12.41	1.29	7.0%
PROVATIINS	22.5	25.0	22.2	258751	6.11	▼	-14%	1.34%	▼	-13.8%	29.14	12.98	668	12.71	1.44	11.8%
PURABIGEN	15.3	17.5	15.0	490460	8.00	▼	-53%	1.75%	▼	-7.8%	36.95	12.38	846	15.30	1.61	11.4%
RELIANCINS	46.9	49.0	44.8	19698	0.91	▲	19%	0.20%	▲	1.7%	55.81	48.57	4932	11.38	1.12	9.6%
REPUBLIC	21.0	23.5	20.7	211140	4.65	▼	-12%	1.02%	▲	0.0%	32.77	13.83	827	14.00	1.79	14.1%
RUPALIINS	23.6	24.8	23.3	1300668	31.23	▼	-36%	6.85%	▼	-2.9%	53.94	16.41	1645	15.23	1.04	7.7%
SONARBAINS	27.4	31.0	27.1	1297990	37.55	▲	29%	8.24%	▼	-14.9%	32.35	16.02	1035	15.66	1.97	12.4%
STANDARINS	28.3	30.9	28.1	646702	19.41	▲	99%	4.26%	▲	0.0%	42.70	13.23	1114	14.73	1.98	15.2%
TAKAFULINS	26.2	27.5	26.1	43187	1.16	▲	64%	0.26%	▼	-6.8%	42.30	15.80	1053	20.00	1.74	9.3%
UNITEDINS	66.3	73.3	61.8	492015	33.31	▲	1502%	7.31%	▲	11.2%	60.11	23.40	2950	26.03	2.45	7.9%



# Weekly Stock Market Report

Sectorwise	Weekly Market Statistics										Market Technical and Fundamental Indicators					
	Ticker	Close	High	Low	Avg Daily Volume	Avg Daily Turnover (BDTmn)	Δ In Turnover	% of Sector Turnover	weekly Return	RSI****	EIVIA (10)*****	Market Cap	P/E*	P/B**	ROE***	
<b>Life Insurance</b>											<b>BDT Mn</b>					
FAREASTLIF	62.7	63.1	60.1	50969	3.16	▲	37%	0.69%	▲	3.3%	57.53	63.63	4686	0.00	0	0
MEGHNALIFE	54.5	57.0	53.3	122228	6.71	▲	23%	1.47%	▼	-7.5%	37.63	48.21	1827	0.00	0	0
NATLIFEINS	251.1	265.9	222.2	85090	21.18	▼	-74%	4.65%	▼	-2.0%	50.73	192.04	27250	0.00	0	0
PADMALIFE	20.0	22.9	19.4	51211	1.05	▲	32%	0.23%	▼	-12.7%	29.30	29.26	778	0.00	0	0
POPULARLIF	100.0	103.5	97.5	14862	1.52	▼	-49%	0.33%	▲	2.4%	51.70	72.23	6043	21.98	0	0
PRAGATILIF	109.9	114.0	104.5	62192	6.80	▼	-9%	1.49%	▼	-21.4%	37.30	107.07	1467	0.00	0	0
PRIMELIFE	50.0	52.1	50.0	284266	14.48	▲	1131%	3.18%	▼	-8.1%	33.82	37.49	1526	0.00	0	0
PROGRESLIF	82.3	90.0	73.5	20411	1.59	▼	-66%	0.35%	▼	-5.0%	44.49	55.47	1059	0.00	0	0
RUPALILIFE	48.1	50.6	45.7	536951	25.78	▲	36%	5.65%	▼	-11.7%	34.07	29.83	1388	0.00	0	0
SANDHANINS	25.7	26.8	25.6	236338	6.15	▲	32%	1.35%	▲	0.8%	46.50	35.06	2819	0.00	0	0
SUNLIFEINS	16.5	25.4	16.0	182906	3.76	▲	77%	0.82%	▼	-39.6%	16.82	25.94	590	0.00	0	0
<b>ITSector</b>																
AAMRATECH	25.2	26.2	24.9	34449	0.87	▼	-23%	0.57%	▲	0.8%	47.55	26.77	1395	16.05	1.11	7.2%
AAMRANET	52.0	52.7	49.0	41922	2.15	▼	-24%	1.41%	▲	2.0%	49.47	26.77	2758	22.91	2.70	22.1%
AGNISYSL	19.4	19.7	18.7	145845	2.81	▼	-15%	1.84%	▲	1.0%	50.38	20.23	1408	18.32	1.42	7.5%
BDCOM	27.3	27.5	25.8	324347	8.64	▲	18%	5.66%	▲	0.7%	50.08	23.00	1334	12.91	1.97	12.8%
DAFODILCOM	50.3	51.5	44.5	421000	20.46	▲	98%	13.40%	▲	13.0%	69.64	18.77	2511	37.82	3.81	17.0%
GENEXIL	60.9	62.0	53.2	1335374	76.17	▲	331%	49.89%	▲	17.3%	71.23	0.00	4969	35.20	5.78	0.0%
INTECH	31.6	31.9	24.4	960394	28.05	▲	170%	18.37%	▲	19.2%	57.98	11.99	990	13.76	3.44	13.0%
ISNLTD	30.2	31.4	26.6	19310	0.56	▲	93%	0.37%	▲	12.7%	55.96	12.31	330	37.28	2.18	3.4%
ITC	42.7	43.8	39.8	305332	12.95	▲	174%	8.49%	▲	1.9%	51.78	0.00	4887	30.78	3.01	8.3%
<b>Miscellaneous</b>																
AMANFEED	42.7	43.7	41.5	247686	10.52	▲	4%	3.51%	▲	0.0%	50.06	44.33	5456	8.68	1.66	19.2%
ARAMIT	345.5	345.5	298.0	9754	3.20	▲	59%	1.07%	▲	10.0%	59.02	459.86	2073	67.48	2.23	6.8%
BERGERPBL	1496.2	1500.0	1420.0	7512	10.94	▲	32%	3.65%	▲	7.0%	63.83	1930.59	69391	36.97	11.99	40.5%
BEXIMCO	18.8	19.6	18.2	1504703	28.51	▼	-42%	9.52%	▼	-6.5%	36.61	28.36	16475	11.18	0.27	2.2%
BSC	58.6	60.3	52.7	2695804	153.82	▲	83%	51.35%	▲	15.6%	76.02	328.24	8939	38.81	1.08	1.5%
GQBALLPEN	79.9	81.7	77.1	14353	1.15	▲	61%	0.38%	▲	0.5%	52.86	61.24	713	0.00	0.50	-3.3%
KBPPWBIL	9.7	10.5	9.5	65084	0.64	▼	-35%	0.21%	▲	1.0%	45.75	21.48	951	31.29	0.82	6.3%
MIRACLEIND	25.9	26.7	24.7	364678	9.36	▲	47%	3.12%	▼	-0.8%	49.61	22.54	877	42.33	0.69	2.7%
NFML	10.7	11.3	10.2	605198	6.47	▲	31%	2.16%	▼	-0.9%	50.00	18.03	907	36.30	0.89	4.8%
SAVAREFR	107.2	108.1	95.3	1631	0.17	▼	-32%	0.06%	▼	-0.9%	52.49	46.58	149	0.00	17.55	-15.2%
SINOBANGLA	81.8	82.5	75.0	965275	74.72	▲	3%	24.95%	▲	22.1%	81.57	26.58	1636	45.44	3.12	6.7%
ZEALBANGLA	32.2	34.5	31.7	1966	0.05	▼	-40%	0.02%	▼	-9.0%	39.98	6.83	193	0.00	-0.15	40.0%
<b>Pharmaceuticals &amp; Chemicals</b>																
ACI	258.0	258.5	249.5	11990	3.06	▲	61%	0.55%	▲	4.8%	52.04	526.17	12871	0.00	1.22	5.3%
ACIFORMULA	143.0	144.5	137.8	8096	1.15	▲	177%	0.21%	▼	-0.3%	48.76	174.12	6435	49.31	2.63	5.0%
ACMELAB	71.9	73.5	70.2	53677	3.86	▲	39%	0.69%	▲	0.0%	47.67	0.00	15214	11.04	1.34	12.9%
ACTIVEFINE	24.3	24.7	23.3	541939	13.10	▼	-38%	2.36%	▼	-1.2%	43.82	56.04	5830	5.05	1.49	26.7%
ADVENT	30.0	30.6	28.4	476657	13.94	▲	16%	2.51%	▼	-3.5%	45.41	0.00	2264	12.10	3.74	30.9%
AFCAGRO	27.5	28.7	27.2	129852	3.59	▲	12%	0.65%	▼	-3.2%	41.18	66.76	2880	6.11	2.17	34.4%
AMBEEPHA	641.1	657.7	557.0	13232	8.14	▲	182%	1.46%	▲	9.5%	58.40	252.53	1539	185.29	25.40	13.7%
BEACONPHAR	23.6	24.3	22.0	3971512	92.32	▲	21%	16.61%	▲	15.7%	81.04	14.68	5452	31.05	1.82	4.2%
BXPHARMA	83.2	83.7	81.5	125662	10.35	▼	-35%	1.86%	▲	3.7%	58.80	75.61	33742	11.44	1.35	11.0%
BXSYNTH	4.5	5.0	4.2	58645	0.27	▼	-52%	0.05%	▼	-2.2%	41.57	8.09	390	0.00	0.22	-14.2%
CENTRALPHL	10.8	11.6	10.2	872841	9.55	▲	104%	1.72%	▼	-0.9%	40.53	21.92	1294	15.57	0.74	3.8%
FARCHEM	11.4	11.5	10.9	462347	5.20	▼	-4%	0.94%	▼	-1.7%	43.97	30.74	2260	8.33	0.90	12.3%
GHCL	38.1	38.9	36.0	15527	0.58	▼	-11%	0.11%	▲	2.7%	49.20	37.37	2743	35.61	0.71	2.1%
GLAXOSMITH	1634.3	1645.0	1438.0	6091	9.42	▲	150%	1.69%	▲	14.4%	78.91	1798.16	19688	27.30	7.61	24.5%
IBNSINA	255.0	258.5	250.6	24979	6.37	▼	-20%	1.15%	▼	-0.8%	45.07	150.72	7967	15.04	7.21	50.6%
IBP	24.5	24.8	23.6	1904269	46.17	▲	45%	8.30%	▲	3.4%	55.16	0.00	2506	13.98	2.67	15.5%
IMAMBUTTON	24.3	26.3	22.0	16010	0.39	▲	74%	0.07%	▲	4.7%	51.33	8.98	187	25.31	3.91	6.2%
JMISMDL	466.1	475.0	439.5	165029	76.07	▲	57%	13.68%	▲	1.8%	57.92	155.76	10301	74.71	13.85	10.4%
KEYACOSMET	3.3	3.7	3.3	443679	1.56	▼	-40%	0.28%	▼	-5.7%	33.80	14.28	3307	2.48	0.26	11.1%
KOHINOOR	385.9	386.6	377.0	2047	0.78	▼	-31%	0.14%	▲	2.2%	59.56	342.06	6490	32.52	11.71	38.2%
LIBRAINFU	861.7	878.0	767.1	7616	6.32	▲	81%	1.14%	▲	7.9%	56.83	288.53	1294	0.00	0.66	0.4%
MARICO	1735.8	1745.0	1650.0	8429	14.42	▲	47%	2.59%	▲	15.7%	83.75	1500.74	54678	29.79	34.60	123.0%
ORIONINFU	63.2	64.4	56.2	630586	39.03	▲	658%	7.02%	▲	13.7%	68.13	49.37	1287	31.44	5.03	12.7%
ORIONPHARM	32.4	33.4	32.0	202791	6.63	▲	49%	1.19%	▲	1.3%	48.06	34.22	7582	8.80	0.46	4.9%
PHARMAID	544.8	555.0	479.0	64337	33.25	▲	60%	5.98%	▲	4.4%	52.30	229.24	1700	33.65	11.00	32.5%
RECKITT BEN	2464.3	2520.0	2330.0	5982	14.64	▲	209%	2.63%	▲	7.7%	65.26	1580.74	11644	27.96	49.27	150.2%
RENATA	1179.5	1181.0	1167.1	4987	5.86	▼	-11%	1.05%	▲	0.6%	50.74	1220.37	94992	24.24	7.34	29.9%
SALVOCHEM	15.0	15.8	14.1	321071	4.85	▲	125%	0.87%	▼	-2.6%	48.49	13.38	975	24.65	1.39	7.5%

# Weekly Stock Market Report

## Sectorwise Traded Script

Ticker	Weekly Market Statistics									Market Technical and Fundamental Indicators					
	Close	High	Low	Avg Daily Volume	Avg Daily Turnover	Δ (%)	% of Sector	Weekly Return	RSI****	EV/EA (10)****	Market Cap	Industry P/E*	P/B**	ROE***	
SILCOPHL	27.6	27.9	26.5	1202977	32.69	▼ -21%	5.49%	▲ 1.5%	58.52	0.00	2605	33.25	1.59	0.0%	
SILVAPHL	21.4	22.0	20.4	339392	7.22	▼ -23%	0.01	▲ 1.4%	47.78	13.38	2782	12.66	1.69	6.8%	
SQURPHARMA	251.9	252.7	250.0	376020	94.63	▼ -9%	15.88%	▼ -1.2%	43.04	249.04	198751	15.32	4.05	27.7%	
WATACHEM	474.5	485.0	443.8	65477	30.45	▲ 51%	0.05	▲ 6.7%	55.29	150.68	5627	40.67	8.34	9.8%	
<b>Service&amp;RealEstate</b>				<b>(BDTmn)</b>					<b>BDT Mn</b>						
EHL	53.2	53.8	51.3	356394	18.72	▲ 5%	53.47%	▲ 3.9%	56.67	34.06	4966	14.90	3.34	23.1%	
SAIFPOWER	16.6	17.2	16.2	878302	14.60	▲ 169%	41.72%	▼ -2.4%	31.48	71.78	5337	11.03	0	0	
SAMORITA	68.0	68.5	65.4	7398	0.50	▼ -44%	1.42%	▲ 1.8%	55.60	76.70	1222	29.57	1.58	4.9%	
SAPORTL	21.0	21.4	20.2	56766	1.19	▼ -48%	3.39%	▼ -2.8%	41.10	55.12	4689	46.46	0.82	2.4%	
<b>Tannery</b>															
APEXFOOT	283.0	289.9	273.0	7333	2.06	▲ 311%	0.78%	▲ 0.8%	51.36	334.38	3184	30.46	1.24	5.2%	
APEXTANRY	141.4	142.5	133.0	53619	7.38	▲ 52%	2.79%	▲ 1.1%	55.14	114.19	2155	74.03	1.92	3.4%	
BATASHOE	968.3	998.8	955.5	11736	11.38	▲ 777%	4.30%	▼ -5.2%	37.89	1326.22	13246	20.66	3.72	30.5%	
FORTUNE	42.3	42.7	40.3	4553860	188.84	▲ 15%	71.37%	▲ 9.9%	69.97	0.00	5285	18.09	0	0	
LEGACYFOOT	133.5	137.2	106.0	443352	54.22	▲ 87%	20.49%	▲ 17.7%	61.20	25.79	1746	20.14	21.15	33.9%	
SAMATALETH	70.3	71.9	58.1	10567	0.71	▲ 142%	0.27%	▲ 15.6%	60.39	23.02	725	516.91	4.76	0.1%	
<b>Telecommunication</b>															
GP	337.1	337.6	320.5	137731	45.34	▼ -17%	43.89%	▲ 3.4%	50.15	253.07	455186	12.64	13.56	109.5%	
BSCCL	123.0	124.9	110.6	487301	57.95	▲ 69%	56.11%	▲ 13.1%	54.07	103.56	20283	44.40	3.38	1.3%	
<b>Travel&amp;Leisure</b>															
PENINSULA	23.80	24.70	23.50	348915	8.38	0.47	0.00	-0.03	41.86	16.91	2824.27	24.04	0.78	0.02	
SEAPEARL	#N/A	#N/A	#N/A	#N/A	#N/A	#N/A	0.00%	#N/A	#N/A	#N/A	#N/A	#N/A	#N/A	#N/A	
UNITEDAIR	1.6	1.7	1.5	671729	1.04	▼ -38%	0.00%	▼ -11.1%	31.44	8.87	1325	0.00	0.20	-16.3%	
UNIQUEHRL	49.3	51.0	49.0	93787	4.70	▲ 5%	0.00%	▼ -2.6%	38.96	45.32	14514	23.82	0.56	2.3%	
<b>Jute</b>															
JUTESPINN	80.6	85.1	72.7	1237	0.10	▲ 114%	0.51%	▼ -7.6%	43.75	48.34	137	0.00	-0.41	35.2%	
NORTHERN	1068.5	1068.5	950.0	2821	2.86	▲ 15%	14.83%	▲ 6.5%	54.77	256.61	2289	94.14	14.09	-23.3%	
SONALIANSH	521.8	551.7	420.0	33193	16.31	▲ 170%	84.66%	▲ 21.5%	64.12	124.26	1415	695.73	2.32	0.8%	
<b>Textile</b>															
ACFL	32.7	33.8	31.4	194136	6.31	▲ 7%	2.29%	▼ -4.1%	45.59	0.00	3297	0.00	0	0	
AIL	55.3	55.5	51.0	505517	27.08	▲ 51%	9.82%	▼ -0.9%	49.74	102.83	2287	11.59	7.26	46.5%	
AL-HAJTEX	53.2	53.2	47.2	271829	13.83	▼ -20%	5.01%	▲ 3.5%	44.91	102.83	1186	0.00	4.74	4.5%	
ALLTEX	11.4	11.5	10.4	67828	0.75	▼ -22%	0.27%	▼ -4.2%	54.78	20.53	638	1.31	0.45	30.0%	
ANLIMAYARN	37.1	38.8	35.9	245394	9.10	▲ 30%	3.30%	▼ -0.8%	49.31	19.33	663	72.75	3.36	4.9%	
APEXSPINN	134.5	137.4	125.6	37268	4.91	▲ 180%	1.78%	▲ 0.3%	53.00	74.10	1130	46.70	2.55	5.6%	
ARGONDENIM	23.5	24.6	23.2	100633	2.38	▲ 11%	0.86%	▼ -0.4%	43.16	24.01	2819	8.22	0.96	13.5%	
ALIF	9.0	9.4	8.9	579696	5.26	▼ -41%	1.91%	▼ -6.3%	38.92	12.89	2166	9.34	1.16	11.7%	
CNATEX	2.4	2.8	2.3	421263	1.08	▼ -7%	0.39%	▲ 0.0%	44.86	11.60	574	#DIV/0!	0.16	0.0%	
DACCADYE	3.6	3.6	2.8	75939	0.24	▲ 62%	0.09%	▲ 2.9%	49.58	14.14	314	0.00	0.23	0.0%	
DELTA SPINN	4.6	5.1	4.5	80831	0.39	▼ -63%	0.14%	▼ -14.8%	33.82	9.54	766	153.33	0.35	0.0%	
DSHGARME	189.1	200.9	157.4	24265	4.49	▲ 255%	1.63%	▲ 9.1%	54.79	131.08	1258	84.25	13.59	36.2%	
DSSL	17.2	17.8	16.7	966836	16.57	▼ -5%	6.01%	▲ 0.6%	45.95	0.00	2730	7.07	2.42	32.9%	
DULAMIACOT	53.9	54.8	44.1	18068	0.92	▲ 365%	0.33%	▲ 16.4%	66.24	7.03	407	0.00	5.38	-40.3%	
ENVOYTEX	32.8	33.6	31.2	22209	0.73	▼ -40%	0.27%	▼ -0.9%	46.52	46.38	5502	10.26	0.91	5.7%	
ESQUIRENIT	41.7	42.7	40.4	383243	15.85	▲ 11%	5.75%	▼ -1.4%	46.02	0.00	5625	12.75	1.23	0.0%	
ETL	12.3	12.6	11.9	54423	0.66	▼ -37%	0.24%	▲ 1.7%	47.71	0.00	1948	12.81	0.92	8.0%	
FAMILYTEX	3.0	3.2	3.0	592528	1.82	▼ -52%	0.66%	▼ -11.8%	31.22	11.17	1062	0.00	0.25	-0.6%	
FEKDIL	15.1	15.6	14.9	290340	4.41	▼ -25%	1.60%	▼ -3.8%	41.37	23.12	3084	10.65	0.90	8.8%	
GENNEXT	4.1	4.4	4.0	1112655	4.63	▼ -28%	1.68%	▼ -10.9%	31.83	9.34	2029	5.62	0.39	9.8%	
HFL	20.2	20.5	18.8	71866	1.41	▼ -30%	0.51%	▲ 3.6%	51.94	21.07	1839	12.87	0.53	5.3%	
HRTEX	46.9	48.9	44.5	280823	13.17	▲ 55%	4.77%	▲ 2.2%	51.94	21.56	1187	27.11	3.20	11.8%	
HWAWELLTEX	37.5	38.0	37.1	4550	0.17	▼ -33%	0.06%	▲ 1.4%	48.47	29.11	2100	15.06	1.33	8.1%	
KTL	20.5	21.1	19.2	987949	19.57	▲ 62%	7.10%	▼ -1.0%	51.94	0.00	2007	6.05	1.78	22.9%	
MAKSONSPIN	5.6	5.9	5.4	379292	2.12	▼ -23%	0.77%	▼ -5.1%	42.53	8.19	1334	29.47	0.30	2.7%	
MALEKSPIN	15.0	15.6	14.6	136929	2.06	▲ 14%	0.75%	▲ 0.0%	42.11	16.26	2904	16.13	0.33	2.6%	
MATINSPINN	38.4	39.2	37.5	9796	0.37	▼ -83%	0.14%	▼ -3.3%	46.23	39.42	3744	25.43	0.91	7.4%	
METROSPIN	7.8	8.6	7.6	635073	5.19	▲ 91%	1.88%	▼ -1.3%	49.03	9.11	481	55.87	0.50	0.6%	
MHSML	10.4	11.2	9.9	27334	0.28	▲ 30%	0.10%	▼ -1.9%	42.59	28.59	1030	0.00	0.65	3.3%	
MITHUNKNIT	12.3	12.5	11.0	15453	0.18	▼ -8%	0.07%	▼ -10.2%	40.71	73.83	400	0.00	0.56	-9.8%	
MLDYEING	29.8	30.8	29.1	149784	4.46	▼ -47%	1.62%	▼ -2.9%	43.05	0.00	5736	20.09	1.72	8.1%	
NEWLINE	21.9	22.4	21.1	980159	21.18	▲ 0%	7.68%	▼ -4.8%	45.85	0.00	1531	26.07	1.21	0.0%	
NURANI	14.5	14.9	14.1	695381	10.06	▼ -21%	3.65%	▼ -1.4%	43.53	0.00	1469	9.42	1.39	18.6%	
PDL	15.0	15.6	14.7	520051	7.83	▲ 6%	2.84%	▼ -1.3%	44.28	0.00	2174	9.70	1.12	13.8%	

# Weekly Stock Market Report

## SectorwiseTradedScript

Weekly Market Statistics									Market Technical and Fundamental Indicators						
Ticker	Close	High	Low	Avg Daily Volume	Avg Daily Turnover (BDTmn)	Δ in Turnover	% of Sector	weekly Return	RSI****	EMV (10)*****	Market Cap	Trading P/E*	P/B**	ROE***	
<b>Textile</b>									<b>BDT Mn</b>						
PTL	57.7	60.9	56.7	332055	19.37	▲ 26%	6.37%	▼ -3.5%	42.59	16.03	7818	19.44	3.17	11.5%	
PRIMETEX	30.3	30.8	28.5	267403	7.97	▲ 33%	2.62%	▲ 2.4%	51.09	15.09	1157	30.00	0.63	2.2%	
QUEENSOU	31.4	31.9	30.0	106130	3.27	▲ 7%	1.08%	▼ -1.3%	44.43	0.00	3459	14.44	2.36	16.4%	
RAHIMTEXT	358.3	364.0	339.0	47911	16.77	▲ 453%	5.52%	▲ 0.1%	43.48	223.20	3081	58.51	11.03	19.8%	
REGENTTEX	14.8	15.4	14.5	317188	4.71	▼ -26%	1.55%	▼ -3.3%	43.00	0.00	1795	12.06	0.52	3.9%	
RNSPIN	5.1	5.4	5.0	1097120	5.69	▼ -31%	1.87%	▼ -5.6%	37.92	21.44	2002	10.27	0.32	3.0%	
SAFKOSPINI	16.5	17.2	16.2	180253	2.99	▲ 19%	0.98%	▼ -1.8%	45.03	17.04	495	109.01	0.98	2.4%	
SAIHAMCOT	23.9	25.4	23.0	218455	5.21	▼ -28%	1.71%	▲ 3.5%	47.49	14.48	3556	17.84	1.05	4.7%	
SAIHAMTEX	39.6	43.8	39.0	3135	0.12	▼ -77%	0.04%	▼ -3.4%	36.01	15.08	3586	22.63	1.47	4.5%	
SHASHADNII	38.6	39.4	37.8	166977	6.47	▼ -7%	2.13%	▼ -0.5%	37.36	36.73	4938	7.74	0.92	11.4%	
SIMTEX	22.4	23.3	21.8	491470	10.99	▼ -30%	3.62%	▼ -4.7%	40.88	0.00	1698	9.65	1.19	12.1%	
SONARGAOI	36.4	38.0	35.0	92330	3.38	▼ -39%	1.11%	▲ 21.3%	59.85	8.56	963	27.37	1.26	-1.9%	
SQUARETEX	42.8	42.8	42.0	7632	0.32	▼ -64%	0.11%	▼ -0.2%	47.46	73.22	8442	16.16	1.15	6.5%	
TALLUSPIN	4.0	4.1	3.5	33260	0.13	▼ -36%	0.04%	▲ 8.1%	44.20	19.36	357	0.00	0.31	-1.9%	
TOSRIFA	18.3	18.8	18.0	35290	0.65	▼ -32%	0.21%	▼ -2.7%	45.47	18.00	1214	15.72	0.58	4.0%	
TUNGHAI	3.4	3.6	3.1	140910	0.47	▲ 47%	0.16%	▲ 13.3%	51.49	12.11	363	#DIV/0!	0.28	0.0%	
VFSTDL	47.7	51.6	46.5	479126	23.15	▼ -16%	7.62%	▲ 0.4%	40.43	0.00	4445	13.27	0.00	0.0%	
ZAHEENSPIN	8.6	9.3	8.5	181406	1.60	▼ -15%	0.53%	▼ -1.1%	39.29	19.34	932	11.03	0.77	20.1%	
ZAHINTEX	7.8	8.2	7.8	63900	0.51	▼ -39%	0.17%	▲ 0.0%	41.55	20.41	638	0.00	0.32	2.5%	
<b>Paper &amp; Printing</b>									<b>BDT Mn</b>						
BPML	67.1	67.9	64.0	178151	11.64	▲ 6%	71.90%	▲ 0.0%	51.37	0.00	11661	15.53	0	0	
HAKKANIPUI	59.0	60.0	52.8	64939	3.68	▲ 55%	22.71%	▲ 1.0%	51.99	41.93	1121	0.00	2.09	-3.4%	
KPPL	13.6	14.0	12.5	65336	0.87	▲ 47%	5.39%	▲ 3.0%	52.40	13.59	993	0.00	0.86	-6.1%	
<b>Miscellaneous</b>									<b>BDT Mn</b>						
AMANFEED	42.7	43.7	41.5	247686	10.52	▲ 4%	65.00%	▲ 0.0%	50.06	44.33	5456	8.68	1.66	19.2%	
ARAMIT	345.5	345.5	298.0	9754	3.20	▲ 59%	19.77%	▲ 10.0%	59.02	459.86	2073	67.48	2.23	6.8%	
BERGERPBL	1496.2	1500.0	1420.0	7512	10.94	▲ 32%	67.56%	▲ 7.0%	63.83	1930.59	69391	36.97	11.99	40.5%	
BEXIMCO	18.8	19.6	18.2	1504703	28.51	▼ -42%	176.12%	▼ -6.5%	36.61	28.36	16475	11.18	0.27	2.2%	
BSC	58.6	60.3	52.7	2695804	153.82	▲ 83%	950.36%	▲ 15.6%	76.02	328.24	8939	38.81	1.08	1.5%	
QGBALLPEN	79.9	81.7	77.1	14353	1.15	▲ 61%	7.09%	▲ 0.5%	52.86	61.24	713	0.00	0.50	-3.3%	
KBPPWBIL	9.7	10.5	9.5	65084	0.64	▼ -35%	3.96%	▲ 1.0%	45.75	21.48	951	31.29	0.82	6.3%	
MIRACLEIND	25.9	26.7	24.7	364678	9.36	▲ 47%	57.80%	▼ -0.8%	49.61	22.54	877	42.33	0.69	2.7%	
NFML	10.7	11.3	10.2	605198	6.47	▲ 31%	39.98%	▼ -0.9%	50.00	18.03	907	36.30	0.89	4.8%	
SAVAREFR	107.2	108.1	95.3	1631	0.17	▼ -32%	1.04%	▼ -0.9%	52.49	46.58	149	0.00	17.55	-15.2%	
SINOBANGL	81.8	82.5	75.0	965275	74.72	▲ 3%	461.66%	▲ 22.1%	81.57	26.58	1636	45.44	3.12	6.7%	
SKTRIMS	49.2	49.5	44.6	871287	40.94	▲ 121%	252.95%	▲ 9.6%	62.04	0.00	3788	18.89	7.41	30.0%	
USMANIAGL	95.0	97.0	84.0	32052	2.89	▲ 10%	17.85%	▲ 3.9%	54.92	95.43	1654	0.00	11.50	-14.3%	



# Weekly Stock Market Report



## Latest Corporate Declarations

Ticker	Declared Dividend	EPS	NAV	Cash Flow	Record Date	AGM Date
--------	-------------------	-----	-----	-----------	-------------	----------

# Weekly Stock Market Report



## Weekly Block Transactions

Instr Code	Max Price	Min Price	Trades	Quantity	Value(In mn)
INTRACO	24.0	23.5	2	157500	3.8
1STPRIMFMF	17.60	17.60	1	30000	0.53
IBNSINA	276.9	276.9	1	25000	6.9
NLI1STMF	15.00	15.00	1	60000	0.90
RUPALIINS	25.2	24.5	2	140000	3.5
SILVAPHL	22.80	22.80	1	50000	1.14
IFIC	10.4	10.4	1	50000	0.5
SUMITPOWER	35.80	35.80	1	149500	5.35
UNITEDINS	67.9	61.8	13	524384	33.0
BATBC	1320.00	1320.00	1	4000	5.28
CITYGENINS	16.0	16.0	2	798000	12.8
DAFODILCOM	45.60	45.60	2	91000	4.15
FINEFOODS	40.5	39.4	5	243000	9.7
MONNOSTAF	825.00	825.00	1	688	0.57
NAVANACNG	44.5	44.5	1	225000	10.0
STANDARINS	31.00	30.50	2	500000	15.45
ATCSLGF	12.0	12.0	1	50000	0.6
BSC	52.00	52.00	1	20000	1.04
EASTRNLUB	1183.0	1183.0	1	500	0.6
FORTUNE	40.50	40.50	4	1250000	50.63
FUWANGFOOD	13.4	13.4	2	520000	7.0
IBP	26.20	26.20	5	360000	9.43
PRIMEINSUR	24.8	24.8	1	22000	0.5
PTL	61.00	61.00	1	120000	7.32
RENWICKJA	1415.0	1410.0	2	1190	1.7
SKTRIMS	48.30	48.30	1	10900	0.53
AGRANINS	23.7	23.7	1	36000	0.9
BXPHERMA	82.70	82.70	1	196961	16.29
EHL	56.0	56.0	1	40000	2.2
OLYMPIC	223.30	223.30	1	236918	52.90
RUPALILIFE	44.0	44.0	2	200000	8.8
SHURWID	33.10	33.10	1	180000	5.96
SQURPHARMA	251.3	251.3	1	376937	94.7
VFSTD	49.00	49.00	1	61500	3.01
BANKASIA	16.6	16.6	1	5500000	91.3
DULAMIACOT	50.00	50.00	1	10000	0.50
GENEXIL	57.0	57.0	1	25000	1.4
GLAXOSMITH	1620.00	1548.00	2	4000	6.34
IPDC	25.0	25.0	1	1000000	25.0
POPULARLIF	100.00	100.00	1	300000	30.00
UNIQUEHRL	50.3	50.3	1	21000	1.1
UPGDCL	385.00	385.00	2	17000	6.55

# Weekly Stock Market Report



LBSL's Research Reports are also available on  
[lankabangla.duinvest.com](http://lankabangla.duinvest.com)

## Disclaimers

This document ("the Report") is published by LankaBangla Securities Ltd ("LBSL") for information only of its clients. All information and analysis in this Report have been compiled from and analyzed on the basis of LBSL's own research of publicly available documentation and information. LBSL has prepared the Report solely for informational purposes and consistent with Rules and regulations of SEC. The information provided in the Report is not intended to, and does not encompass all the factors to be considered in a best execution analysis and related order routing determinations. LBSL does not represent, warrant, or guarantee that the Report is accurate. LBSL disclaims liability for any direct, indirect, punitive, special, consequential, or incidental damages related to the Reports or the use of the Report. The information and analysis provided in the Report may be impacted by market data system outages or errors, both internal and external, and affected by frequent movement of market and events. Certain assumptions have been made in preparing the Report, and changes to the assumptions may have a material impact on results. The Report does not endorse or recommend any particular security or market participant. LBSL, its analysts and officers confirm that they have not received and will not receive any direct or indirect compensation in exchange for expressing any specific recommendation, opinion or views in its Report. The information and data provided herein is the exclusive property of LBSL and cannot be redistributed in any form or manner without the prior written consent of LBSL. This disclaimer applies to the Report in their entirety, irrespective of whether the Report is used or viewed in whole or in part.

## LBSL Capital Market Research Department

Zobayed Al Mamun Hasan

Head of Research

[zobayed.hasan@lbsbd.com](mailto:zobayed.hasan@lbsbd.com)

### Analyst

Tanzina Ahmen Chowdhury  
Md. Fozlul Hoque  
Rufaiya Zabin  
Md. Yousuf Ahammed  
Tahan Abdullah  
Mashrur Ahmed Chowdhury  
Shatosree Saha

### Designation

Assistant Manager  
Research Associate  
Research Associate  
Research Associate  
Research Associate  
Research Associate  
Research Associate

### E-mail

[tanzina@lbsbd.com](mailto:tanzina@lbsbd.com)  
[md.fozlul.hoque@lbsbd.com](mailto:md.fozlul.hoque@lbsbd.com)  
[rufaiya.zabin@lbsbd.com](mailto:rufaiya.zabin@lbsbd.com)  
[yousuf.ahammed@lbsbd.com](mailto:yousuf.ahammed@lbsbd.com)  
[tahan.abdullah@lbsbd.com](mailto:tahan.abdullah@lbsbd.com)  
[mashrur.ahmed@lbsbd.com](mailto:mashrur.ahmed@lbsbd.com)  
[shatosree.saha@lbsbd.com](mailto:shatosree.saha@lbsbd.com)

## Institutional & Foreign Trade Department

Rehan Muhammad

Head of Institutional &

[rehan@lbsbd.com](mailto:rehan@lbsbd.com)/[rmuhammad1@bloomberg.net](mailto:rmuhammad1@bloomberg.net)

### LankaBangla Securities Limited

Capital Market Research Department

Corporate Office

A.A. Bhaban (Level-5)

23 Motijheel C/A

[research@lbsbd.com](mailto:research@lbsbd.com)

Dhaka-1000, Bangladesh

Phone: +880-2-9513794 (Ext-122)

Fax: +880-2-9563902

**Website: [www.lbsbd.com](http://www.lbsbd.com)**